

Department of Economics

New appointments for 2016-17

ABI ADAMS	STEPHEN HANSEN	ANOUK RIGTERINK
MIGUEL BALLESTER	DONHATAI HARRIS	DAVID RONAYNE
PAUL BRANDILY	STEFAN HUBNER	DEWI SPIJKERMAN
JAMES DUFFY	SANJAY JAIN	DANIEL SUSSKIND
JEAN FLEMMING	OLE JANN	ANDRE VEIGA

Abi Adams

Associate Professor-New College



Abi Adams from Yale University to an Associate Professorship in Economics and Tutorial Fellowship at New College. Abi's main research field is applied microeconomics with a focus on the econometrics of consumer choice.

Miguel Ballester

Associate Professor-Balliol College



Miguel Ballester, from Associate Professor at Autònoma University of Barcelona and Visiting Professor at New York University, to an Associate Professor in Economics and Tutor at Balliol College. Miguel is mostly interested in individual decision-making, with a special emphasis on its psychological foundations. He has recently studied how to measure rationality.

Paul Brandily

Urbanisation-Research Assistant



Paul Brandily is a research assistant for the LSE-Oxford “Urbanisation in Developing Countries” programme. He holds a Master from the Paris School of Economics and is also “agrégé” in economics and social sciences. Paul joined the University of Oxford after almost two years working with the World Bank (DIME) in eastern Democratic Republic of the Congo (Kivu regions).

James Duffy

Associate Professor-Corpus Christi College



James Duffy: from a Postdoctoral Fellowship at Nuffield College to an Associate Professorship in Economics and a Tutorial Fellowship at Corpus Christi College. His research is econometric theory, and is principally concerned with non-linear and non-stationary time series models.

Jean Flemming

Nuffield Postdoctoral Research Fellow



Jean is a Nuffield Postdoctoral Research Fellow. Her research interests include macroeconomics, search theory, and labor markets.

Please visit her personal website: www.jeanflemming.com

Stephen Hansen

Associate Professor-University College



Stephen Hansen from Pompeu Fabra University to an Associate Professorship in Economics and Tutorial Fellowship at University College. Research interests include organizational economics, monetary policy, and empirical methods.

Donna Harris

CSAE-Postdoctoral Research Officer



From the Department of International Development at the University of Oxford in her role as Departmental Lecturer in Development Economics to a Postdoctoral Research Officer in CSAE. Donna is a Behavioural and Experimental Economist.

Stefan Hubner

Nuffield Postdoctoral Research Fellow



Stefan Hubner received his Ph.D. (expected November 2016) from Tilburg University, The Netherlands. His research focuses on Applied Microeconometrics, Consumer Demand Estimation, Unobserved Heterogeneity, Nonparametric Identification and Quantile Regression.

Sanjay Jain

Department Lecturer



Sanjay Jain from a University Lectureship in the Faculty of Economics at Cambridge, to a Departmental Lectureship. Sanjay's research and teaching interests are in development economics, political economy, and applied microeconomic theory.

Ole Jann

Nuffield Postdoctoral Research Fellow



Ole did his undergraduate studies at Humboldt University in Berlin and his graduate studies at the University of Copenhagen. His research is in microeconomic theory, with a special focus on information economics, strategic uncertainty and coordination problems.

Anouk Rigterink

OxCarre & Blavatnik School of Government- Postdoctoral Research Fellow



From a Research Officer in the Department of International Development at LSE to an OxCarre Postdoctoral Research Fellow in association with the Blavatnik School of Government. Anouk holds a PhD from LSE and completed her undergraduate studies at the University of Groningen. Her research interests include examining the relationship between natural resources and conflict; some of her recent projects have focused on South Sudan, Syria and Pakistan.

David Ronayne

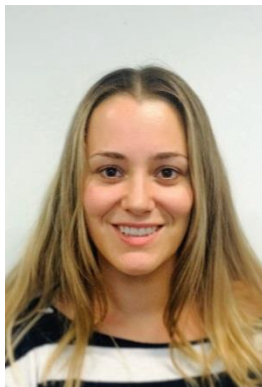
Nuffield Postdoctoral Research Fellow



David holds a PhD from Warwick (2016) and joins the department as a Nuffield Postdoctoral Research Fellow. His research interests include; Applied theory and Experiments.

Dewi Spijkerman

Urbanisation-Research Assistant



MSc Spatial Economics VU Amsterdam

Research interests: Transport & Development Economics.

After completing her BSc in Geography, she worked in the field of Entrepreneurship in South Africa and developed an interest in the functioning of urban areas in developing countries. Since completing her MSc she started working as a research assistant on the joint LSE/Oxford research project on Urbanisation in Developing Countries.

Daniel Susskind

Career Development Fellow-Balliol



Daniel Susskind joins Balliol College as a Career Development Fellow in Economics, where he previously held the position of Lecturer in Economics. Daniel's main research interest is in the impact of technology, particularly artificial intelligence, on economics.

Andre Veiga

Career Development Fellow-Somerville



From a Nuffield Postdoctoral Research Fellow in Economics to a Career Development Fellowship in Economics at Somerville College, Andre's research interests include industrial organisation, contract theory, health insurance and multi-sided markets.